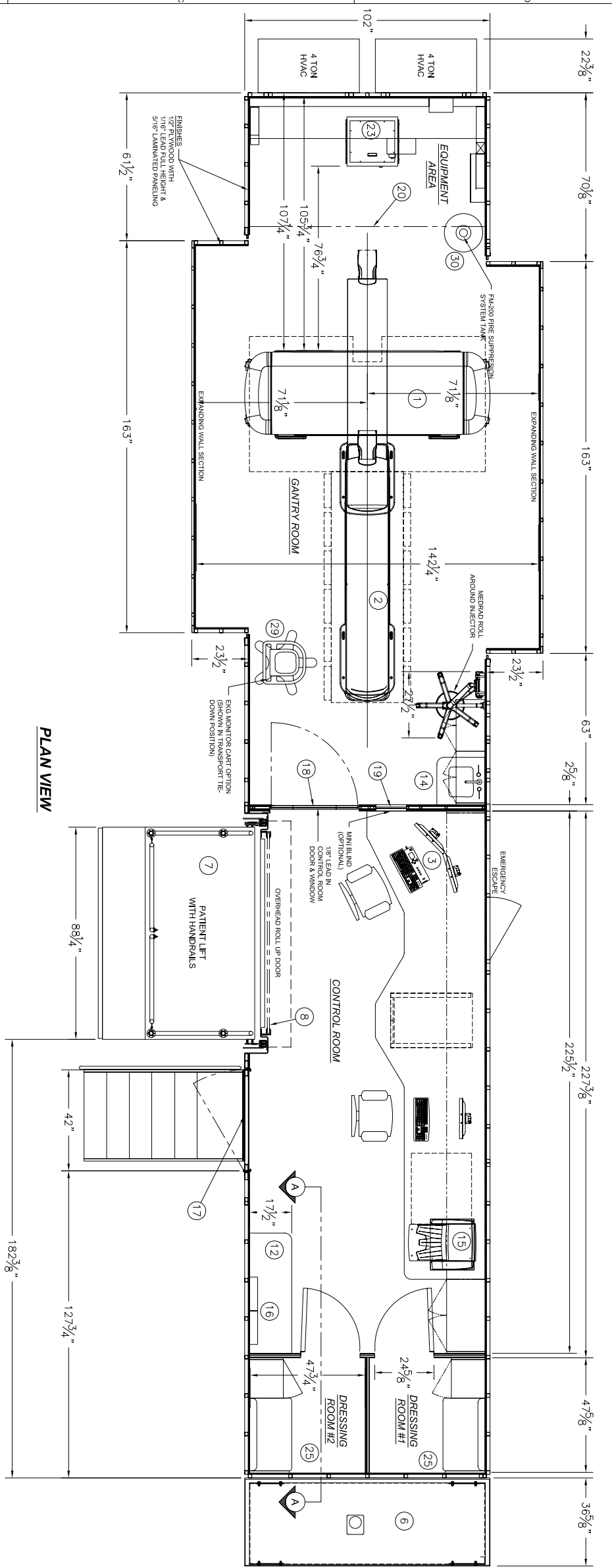
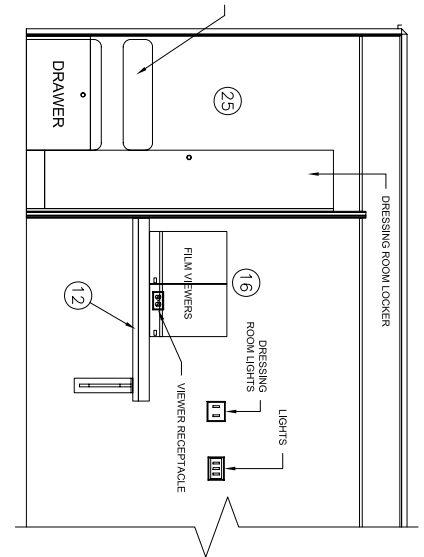


REV	REV. DATE	CHK. BY	CHK. DATE	ENG.	DESCRIPTION
08	03MAY06	WLL	02/13/06	D. BEZOLD	UPDATED FOR 1/4" FURRING

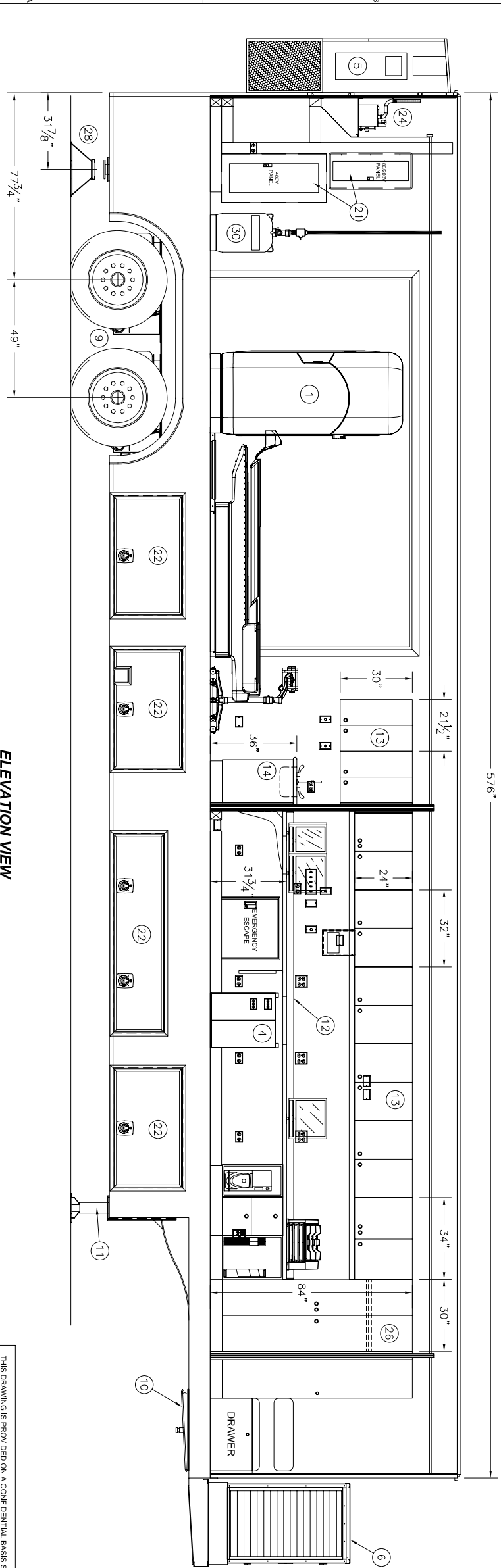
**REVISIONS**



**PLAN VIEW**



**SECTION A-A**



**ELEVATION VIEW**

ITEM QTY	PART NUMBER	DESCRIPTION
29	1	EKG MONITOR ROLL (OPTION)
28	2	STABILIZING STAND
27	1	PUMP w/ OXYGEN TANK CABINET (OPTION)
26	1	18" x 30" x 84" BASE CABINET
25	1	PATIENT CHANGING ROOMS
24	1	HUMIDIFIER
23	1	TEAL TRANSFORMER
22	6	LOWER COMPARTMENT DOOR (4FS/ 5-DS)
21	2	ELECTRICAL SERVICE PANELS (1-480V/ 1-208V)
20	1	CURTAIN
19	1	16" x 24" LEADED WINDOW
18	1	34" x 80" DOOR w/ 16" x 24" LEADED WINDOW
17	1	42" x 80" ENTRY DOOR
16	2	VIEWER
15	1	CODONICS PRINTER (OPTION)
14	1	SINK CABINET
13	8	OVERHEAD CABINETS
12	2	WORK COUNTER
11	2	HYDRAULIC LEVELING LEGS
10	1	AIR RIDE UPPER COUPLER (KING PIN)
9	1	AIR RIDE SUSPENSION
8	1	ROLL-UP DOOR, 6'-5" x 6'-5"
7	1	PLATFORM LIFT
6	1	100KW DIESEL GENERATOR
5	2	48,000 BTU AIR CONDITIONER
4	1	HOST CABINET
3	1	OPERATOR CONSOLE
2	1	PATIENT TABLE
1	1	GANTRY BRILLIANCE CT

**BILL OF MATERIALS**

THIS DRAWING IS PROVIDED ON A CONFIDENTIAL BASIS SUBJECT TO RETURN ON DEMAND OF OSHKOSH SPECIALTY VEHICLES (OSHKOSH), WHICH RETAINS ALL RIGHTS ASSOCIATED WITH IT AND THE ARTICLE OR ARTICLES IT REPRESENTS. DISCLOSURE, REPRODUCTION OR ALTERATION OF ANY PART OF THIS DRAWING OR MANUFACTURE, USE OR SALE OF THE ARTICLE OR ARTICLES REPRESENTED IS PROHIBITED WITHOUT THE PRIOR WRITTEN AUTHORIZATION OF OSHKOSH. © OSHKOSH SPECIALTY VEHICLES (unpublished).

SHEET NUMBER: SHEET 1 OF 1  
 REFERENCE DRAWING: TITLE: GENERAL LAYOUT (40 & 64 SLICE LAYOUTS)  
 PULPUS BRILLIANCE CT  
 8'-6" X 13'-6" X 48'-0" TRAILER

DATE: 29 JUN 05  
 SCALE: 1/2" = 1'-0"

CHECKED BY: JL  
 DRAWING NUMBER: 10270-A01

**OSHKOSH SPECIALTY VEHICLES**  
 16745 S. LATHROP AVENUE  
 HARVEY, IL 60426  
 PHONE: (708) 596-5066  
 FAX: (708) 596-2480

**JOB#**