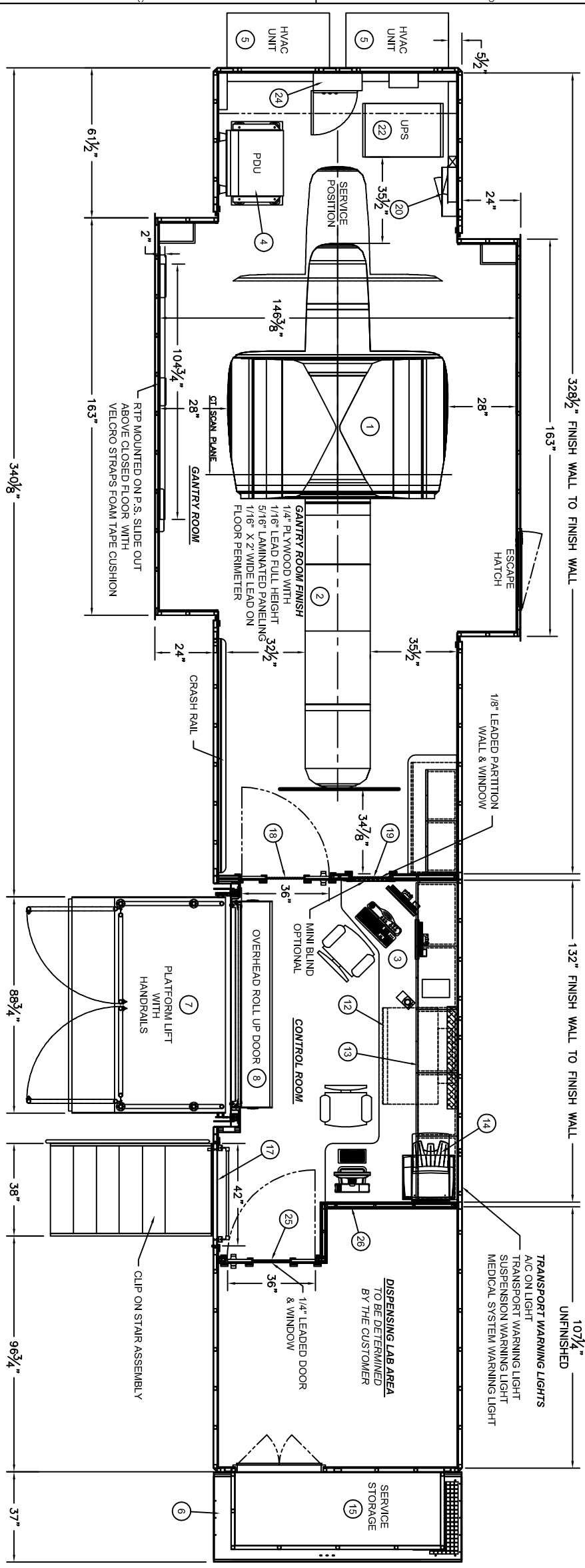
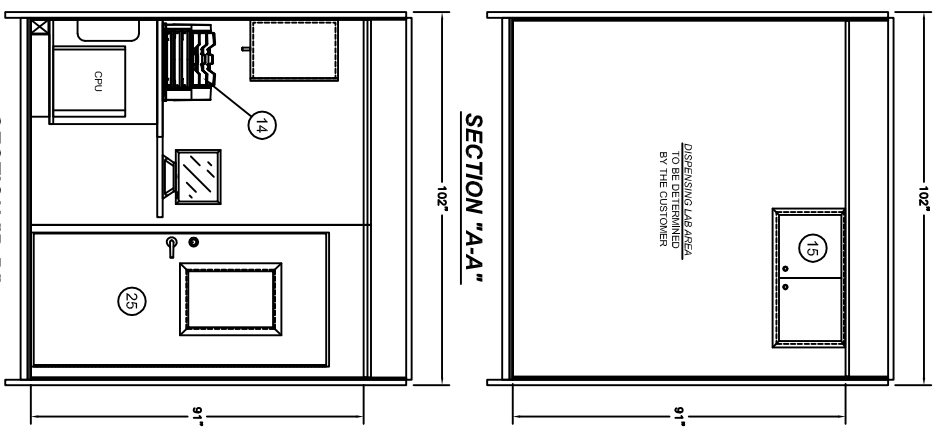


| REV. | REV. DATE | CHK. BY | CHK. DATE | ENG. | DESCRIPTION |
|------|-----------|---------|-----------|------|------------------------------|
| 04 | 28AUG07 | RZ | 08/28/07 | WLL | CHANGED OUTLETS IN SCAN ROOM |

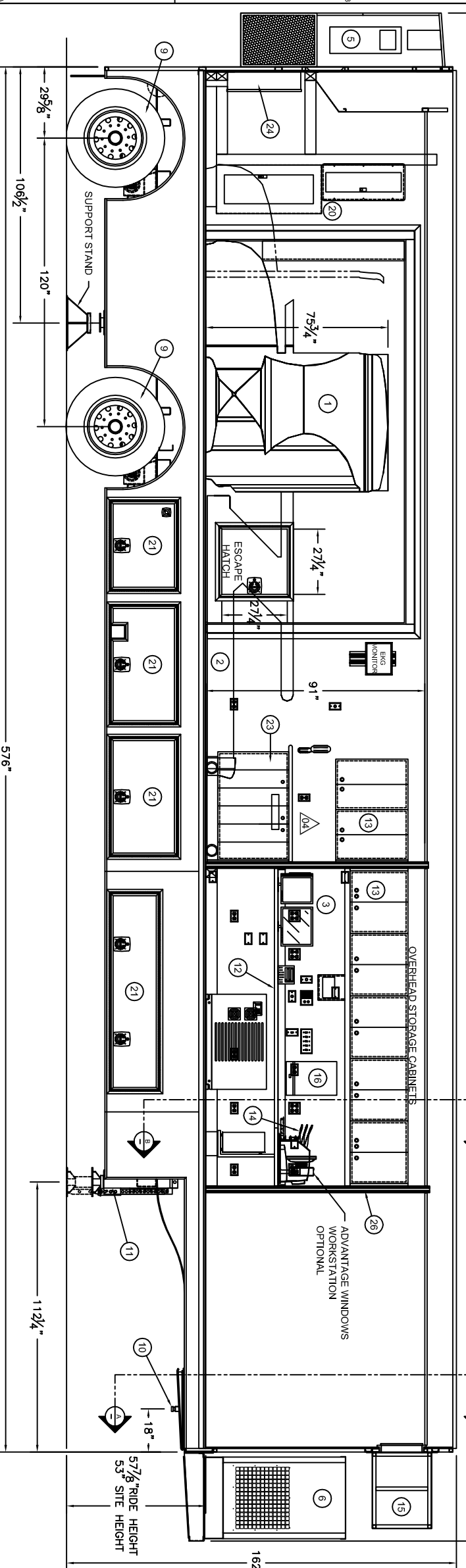
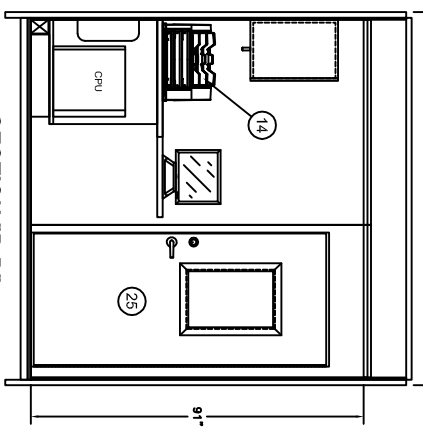


PLAN VIEW

SECTION "A-A"



SECTION "B-B"



ELEVATION VIEW

| ITEM | QTY | PART NUMBER | DESCRIPTION |
|------|-----|-------------|---|
| 26 | 1 | | LEADED PARTITION WALL (1/4" THICK LEAD) |
| 25 | 1 | | 36" x 80" LEADED (1/4") DOOR w/ 16" x 24" x 14.5MM LEADED WINDOW (X2) |
| 24 | 1 | | GE AT PANEL |
| 23 | 1 | | MOVABLE ROLL AROUND STORAGE CABINET W/BI-FOLD DOORS |
| 22 | 1 | | UPS - POWERWARE 9330-20 MODEL 15 (SUPPLIED BY GE) |
| 21 | 9 | | LOWER COMPARTMENT DOORS (44RS / 52S) |
| 20 | 2 | | ELECTRICAL SERVICE PANELS (1-480V / 1-208V) |
| 19 | 1 | | 16" x 24" x 14.5MM LEADED WINDOW |
| 18 | 1 | | 36" x 80" LEADED (1/8") DOOR w/ 16" x 24" x 14.5MM LEAD WINDOW |
| 17 | 1 | | 42" x 80" ENTRY DOOR |
| 16 | 1 | | VIEWER |
| 15 | 1 | | GE SERVICE STORAGE |
| 14 | 1 | | CODONOS PRINTER |
| 13 | 7 | | OVERHEAD STORAGE CABINETS |
| 12 | 2 | | WORK COUNTER |
| 11 | 2 | | EQUILIZER LEVELING LEGS, 25,000 LB. CAP. |
| 10 | 1 | | AIR RIDE UPPER COUPLER (KING PIN) |
| 9 | 1 | | AIR RIDE SUSPENSION, 44,000 LB. CAP. |
| 8 | 1 | | ROLL-UP DOOR 7'-5" WIDE ALUMINUM PLATFORM |
| 7 | 1 | | PLATFORM LIFT - 89" WIDE ALUMINUM PLATFORM |
| 6 | 1 | | 100KW DIESEL GENERATOR |
| 5 | 1 | | 48,000 BTU AIR CONDITIONER |
| 4 | 1 | | POWER DISTRIBUTION UNIT |
| 3 | 1 | | GEMS OPERATOR WORK STATION |
| 2 | 1 | | GEMS PATIENT TABLE |
| 1 | 1 | | GEMS DST H - POWER GANTRY |

BILL OF MATERIALS

THIS DRAWING IS PROVIDED ON A CONFIDENTIAL BASIS SUBJECT TO RETURN ON DEMAND OF OSHKOSH SPECIALTY VEHICLES (OSHKOSH), WHICH RETAINS ANY AND ALL RIGHTS ASSOCIATED WITH IT AND THE ARTICLE OR ARTICLES IT REPRESENTS, DISCLOSURE, REPRODUCTION OR ALTERATION OF ANY PART OF THIS DRAWING OR MANUFACTURE, USE OR SALE OF THE ARTICLE OR ARTICLES REPRESENTED IS PROHIBITED WITHOUT THE PRIOR WRITTEN AUTHORIZATION OF OSHKOSH, © OSHKOSH SPECIALTY VEHICLES (unpublished).

SHEET NUMBER: 1 OF 1
 TITLE: GE MEDICAL SYSTEMS DISCOVERY ST PETCT
 REFERENCE DRAWING: 8-5" X 13-5" X 48-0" TRAILER
 GENERAL LAYOUT
 DATE: 8/30/06
 SCALE: 1/2"=1'-0"
 DRAWN BY: [Signature]
 CHECKED BY: [Signature]
 DRAWING NUMBER: 12193-A01

JOB# 10227-A01-36
 K:\Eng\osv\templates\OSV_TITLE_BLOCK.dwg
 16745 S. LATHROP AVENUE
 HARVEY, LA 70048
 PHONE: (713) 596-5066
 FAX: (713) 596-2480